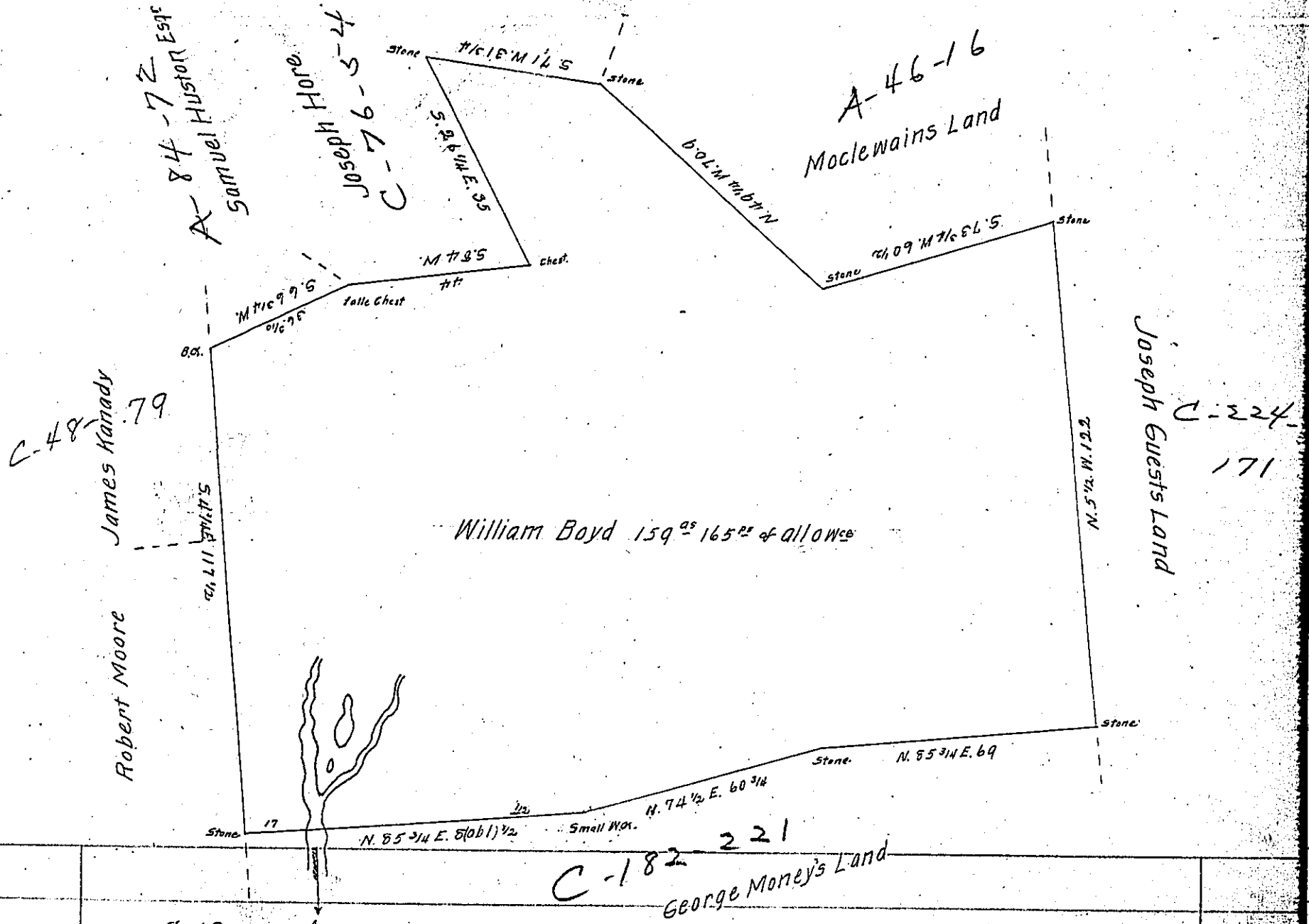


Land now or late of
and Christian Humble.



A Draught of a Tract of land situate in Sadsbury township
in the County of Lancaster containing One hundred and
fifty nine Acres & one hundred and Sixty five perches &
allowance of Six per cent ~~ac~~ by Virtue of a Warrant
dated the 20th December Anno Domini 1749. Surveyed
4th of September A.D. 1812

per
Jacob Hershman D.S.

To Andrew Porter Esq
Surveyor General

IN TESTIMONY that the above is a copy of the original remaining on file in
the Department of Internal Affairs of Pennsylvania, made
conformably to an Act of Assembly approved the 16th day of
February, 1833, I have hereunto set my Hand and caused
the Seal of said Department to be affixed at Harrisburg,
this twenty eighth day of December 1903

Lucas R. ...
Secretary of Internal Affairs